



SMILE OF HOPE

ANNUAL REPORT

2021

A_{BOUT THIS REPORT}

M_{ESSAGE FROM THE CHAIRMAN}

- 1 **T**HE CASE FOR CHANGE
- 2 **H**eadlines from 2021
- 3 **S**OH PROGRAMS & ACTIVITIES
- 4 **O**UR SUPPORT

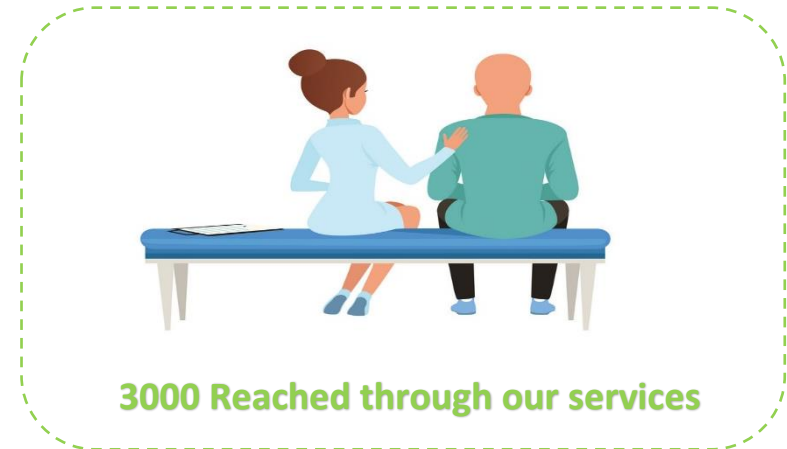
- 5 **L**ISTENING TO OUR STAKEHOLDERS
- 6 **L**OOKING AHEAD
- 7 **B**E IN TOUCH
- 8 **S**TRUCTURE OF SOH
- 9 **F**INANCE
- 10 **W**ORD FOR OUR SUPPORTERS

ABOUT THIS REPORT

This report highlights the work of Smile of Hope Charity for Cancer Care in providing comprehensive services for cancer patients and their families in the Gaza Strip, in the period between January to December 2021.

We sustained & grew our vibrant movement of people with cancer patients who know the end of harsh health, social, economic & environmental conditions is possible — and that each of us can do something to make it happen.

Acting on our strategic priorities, the SOH board members and staff leaders used their positions to influence & enhance a sustainable community through a focus on health, educational services, and psychosocial support for all cancer patients and their families from all segments of society.



The report provides all the achievements & activities which have been implemented with the support of our partners & donors during the year including the activities in the fields of community awareness, health, legal, environment, social awareness, psychosocial support & education for all women, men & children.

Details of our programs & services, a list of our donors & partners, & financial statement are provided in this report.

MESSAGE FROM THE CHAIRMAN

Dr. Mousa Abu Zaid

I am proud to present the 2021 Annual Report, reporting on activities that were implemented & the well impact on our beneficiaries.

Smile of Hope Charity for Cancer Care has a great history and high experience in the humanitarian work of serving cancer patients and has a growing network of relationships and strategic partners. It has high-performance professionals adapting to the challenges & the sophisticated work conditions in the Gaza Strip to make the positive community change. In 2021, SOH worked through its programs boldly and strategically to enhance the response to the most important cancers affecting children, women, and men by providing evidence-based strategies to reduce the burden of cancer in the Gaza Strip.

The year 2021 directed efforts in making informed decisions to create equitable access to cancer prevention and control services for all those who are in need while promoting access to comprehensive and quality services to



the quality of life for people with cancer in the Gaza Strip.

In addition, we continued our work as a leader in different cancer services through medical clinics, mental health clinics, nutrition clinics, natural therapy and sport, and health & education. Moreover; we provided remedial education for children and training courses on vital issues for cancer patients who got their treatment abroad. Furthermore; we provided social support through the provision of transportation for treatment abroad, relief support, and recreational activities.

We look forward to continuing on this journey to all the opportunities that 2022 and beyond bring for achieving our vision where achieving social leadership in providing efficient and effective services to people with cancer and their families in the Gaza Strip.

THE CASE FOR CHANGE



According to the Palestinian Ministry of Health, cancer is the second cause of death in Palestine, after heart disease; The number of cancer patients was estimated at 14 thousand, and the number of registered cases of cancer patients during the past years in the Gaza Strip reached 8,644, 47% of whom are males, and 53% are females.

People suffer from a deterioration in political, health, social, economic educational & environmental conditions that have led to the fragility and vulnerability of the population due to the unjust siege for more than 14 years, which affects the various services and the lack of capacity to respond the challenges.

Gazan people struggle to live every day, especially in the aftermath of the May 2021 Israeli hostility, and its impact on displacement, gender-based violence, mental health, environmental and health risks, and destruction of livelihoods.

In addition, the COVID-19 pandemic put people at risk, not only of a deadly virus but also for its secondary effects, including food insecurity, disease, and malnutrition as well as sexual and other forms of violence. All these factors increase the need for new ways to reduce the human impact of emergencies.

However, humanitarian action remains in need for cancer patients due to restricting their movement and preventing them from traveling for treatment abroad, the severe shortage of medicines and medical supplies needed to treat them in Gaza's hospitals, and the Israeli restrictions on the supply of new medical devices and laboratory materials needed to conduct examinations for patients.

SOH aims to demonstrate its different interventions of humanitarian action to respond to these cancer patients' issues.

ABOUT SMILE OF HOPE CHARITY

Smile of Hope Charity for Cancer Care is a Palestinian non-profit association located in Gaza City-Gaza Strip, it was founded in 2010 & licensed as a non-governmental charitable association by the Ministry of Interior in the Gaza Strip under No. 8166, & Ministry of Palestinian Interior in Ramallah under No. GA-1127-M.

SOH provides different services for cancer patients in the fields of health, education, mental health, and economic empowerment through a network of partnerships with governmental, international, and local institutions working in the humanitarian and developmental action in the Gaza Strip.

SOH practices the democratic process through periodic elections, which contributes to more stable policies & high confidence in partners. It is led by a board of directors made up of 9 female & male activists in the field of humanitarian action, which harnesses all its logistical and human capabilities to serve cancer patients through its various programs.

SOH's programs are designed according to the need study of cancer patients of women, children, youth, and the elderly, in its work areas, including three main programs; Health program, psychosocial support program & education program.

Cancer patients are the most deprived & disadvantaged group that suffer physical, psychological, social & economic experiences, these sufferings affect their quality of life & their families, and result in a more marginalized community. On this side, SOH seeks through its programs to alleviate the suffering of cancer patients, integrate into the local community & keep to provide full care for women, men & children through its inclusive & high-quality services.

Our behaviors and decisions reflect our core principles:

- **We put people first:** the community we serve come first in our decision-making and programming.
- **We are brave:** we have great ambition and are willing to explore new things and take risks to achieve our goals.
- **We operate collectively:** we leverage the value of working as a network, sharing risk, resources and learning together.
- **We are inclusive:** we see the value in diverse perspectives and work to remove the barriers that prevent voices being heard.
- **We are open:** we work transparently and with integrity, building mutual trust in all levels of our work from governance to programming.

OUR VISION

To be a social leader in providing efficient and effective services for cancer patients and their families in the Gaza Strip.

OUR MISSION

To provide high-quality & inclusive services for cancer patients in cooperation and interdependence with governmental & civil organizations, & community segments, while adhering to human rights & law principles through experienced team.

HOW WE DRIVE CHANGE

Our strategy of change is based on evidence that community need is best placed to minimize suffering, injustice, and loss of livelihoods. It promotes a sustainable and dignified response for the voice of cancer patients & families to engage in the different life fields & contribute to their community change. And it accepts that such change requires support from our local & international community to enact and sustain this change.

SOH addresses the different issues of cancer patients through its effective programs & projects focusing on academic education, community integration, and involvement, recreational and psychological support, health services, training, and rehabilitation for cancer patients. It also contributes to empowering the families of cancer patients through psychological, social, and relief support, & develops their capacities in facing cancer. In addition, SOH addresses the local community through raising awareness and education, modifying and changing positive concepts, create the appropriate environment for cancer patients to maintain their dignity and be protected from suffering and harm.

Most notable of our seeking for change, after a great deal of shared thinking, consultation and refinement, SOH launched a new Strategic Plan that will guide all of our work for the next years. This Plan took the humanitarian slogan of " **UNLOCKING THE POWER OF THE PATIENT VOICE** " to be the Power of cancer patients against their different sufferings in the Gaza Strip.

MEDICAL CONSULTATIONS



To improve access and availability of quality health care for cancer patients in the Gaza Strip, SOH set up medical clinics to provide health care for cancer patients including medical consultations in eye and dental examination, internal medicine and oncology, dermatology and neurology. Services were provided through volunteers from doctors or through strategic partnerships with other institutions.

CLINICAL NUTRITION

SOH provides nutritional therapy counseling services for cancer patients & their families by designing special nutritional programs, modifying daily nutritional behaviors & nutritional therapy education sessions, which contribute to the success of the treatment response and alleviate side complications during chemoradiotherapy.



"ROOTED IN OUR LAND" CAMP



In cooperation with National Committee for Summer Camps, SOH implements summer camp called "rooted in our land" for children with cancer, which aims to improve their life quality through different activities including fine arts, recreational activities, education and training.

MEDICAL CLOWN IN RANTISI HOSPITAL

SOH provide psychosocial support service for children with cancer where receive the treatment in Abdul Aziz Al-Rantisi Hospital through periodic visits of the medical clown to alleviate their sufferings & enhance their resilience against cancer.



Diploma in Human Development



Capacity development for SOH's staff through training "Human Development Diploma", which was conducted through Irada International Academy in partnership with international universities and academies with the aim of developing the level and performance of SOH's staff.

Path of Hope Journey

Under the generous patronage of His Excellency President Mahmoud Abbas and under the directives of Saleh El-Zeq, Chairman of the Civil Affairs Committee in the southern governorates, SOH carried out on 03/03/2021 the Path of Hope journey for children with cancer and their families to improve their psychological status. It included visits for some factories and recreational places in GS.



HEALTH PROGRAM

2021 has been a rough year for cancer patients in the Gaza Strip. The usual restrictions and blockade which severely affected patient access to treatment, shortages of medicines, equipment, and specialist staff frustrated detection and treatment efforts, meaning the majority of cancer patients in Gaza never receive the care they deserve.

SOH contributes to developing and implementing all health services related to cancer through a health program (HP) that provides both preventive and medicinal services for cancer patients and their families at all different stages of their life (childhood – to old age). The health program includes different units:

Medical consultations clinics include internal medicine and diabetes, oncology, neurosurgery, pediatrics, dental implants, genetic diseases, dermatology, and others.

Nutritional therapy clinic provides counseling services for cancer patients & their families by designing special nutritional programs, modifying daily nutritional behaviors & education sessions on nutritional therapy, which contribute to the success of the treatment response and alleviate side effects during chemoradiotherapy.

Physiotherapy clinic where breast cancer patients receive physiotherapy service at SOH's physiotherapy unit & field visits by an experienced physiotherapist team to rehabilitate them restore range of motion and relieve pain and after-mastectomy symptoms.



SOH implemented many activities within the health program which are designed to provide cancer patients & their families with full health care needed to help them get a better life.

The activities targeted females, males & children of all ages by providing medical consultations, medicines, medical supplies, and assistive devices, breast cancer early detection, nutritional therapy, health education & awareness sessions, eye examination, COVID-19 vaccine & physiotherapy sessions.



Health Program **IN NUMBERS**

MEDICAL CONSULTATION Service

Medical consultations	1960
Medicines, Medical supplies & assistive devices	1330
Breast cancer early detection	1500
Eye examination + dental	755
COVID-19 vaccine	200

PHYSIOTHERAPY SESSIONS	220
------------------------	-----

NUTRITIONAL THERAPY	300
---------------------	-----

HEALTH EDUCATION & AWARENESS	1440
------------------------------	------

Health Projects & Initiatives

"Mobile Medical Team" Project

Mobile Medical Team project has been carried out by SOH within the period 1 Sep. to 30 Nov. 2021, in partnership with Caritas – Jerusalem and funding from IMC. The purpose of the project is to improve access and availability of quality health care for cancer patients in marginalized areas in the Gaza Strip, where 1200 cancer patients reached specialized & comprehensive medical consultations and medicines.

Physiotherapy Unit Development Initiative

Physiotherapy Unit Development Initiative started its activities on Sep. 2021, with funding from PATEL GROUP. This initiative aims to rehabilitate breast cancer patients to restore range of motion and relieve pain and after-mastectomy symptoms, 220 breast cancer patients received physiotherapy service at SOH's physiotherapy unit & field visits by the physiotherapist team.

Tsawwarty? Campaign

With the support of the **Press House**, Pink October activities were implemented in the period (01 to 12 October 2021). The campaign raised awareness about breast cancer and the importance of early screening for 200 women through group awareness sessions in schools, health clinics, and CBOs in the Gaza Strip.

SOH, ended Pink October activities in partnership with the **Center for Community Training and Crisis Management** and funded by **Islamic Relief**, targeting 200 women through awareness sessions in the period (28 to 31 October 2021).

PSYCHOSOCIAL SUPPORT PROGRAM

Gazans with cancer have harsh different conditions causing them many mental disorders, & psychological and social burdens that burden their families & may hinder their recovery.

SOH psychosocial support program is an integrated support program that is developed to help cancer patients and their families of all ages overcome the social & mental disorders they experience, in a way that enhances trust and human giving under the supervision of an experienced psychologists' team.

The program meets the needs of the cancer patients and their families by providing preventive, developmental, and curative services aimed at achieving good psychological and social compatibility & contributing to alleviating psychological and social pressures, and enhancing the ability to cope with cancer. The services provided within this program:

The service provides **transportation for treatment abroad** for cancer patients and their escorts to travel from the Gaza Strip through the Beit Hanoun crossing in the northern Gaza Strip to receive treatment in hospitals in the West Bank & Jerusalem, & back to the Gaza Strip after receiving the treatment according to treatment schedules, to alleviate

travel obstacles and encourage patients to maintain treatment regularly and on time.

Aid relief service is based on the principle of social solidarity to ensure the “needy” cancer patients & their families get better lives by providing basic needs for the patients.

In-kind aids are provided including food coupons and personal necessities (wig - hair ties - hats), school backpacks, summer and winter clothes, blankets, and others. It also provides medical devices and medicines that are not provided by the hospital such as hearing aids, wheelchairs, walking aids, medical beds & others. Also, cash assistance is provided through this program's interventions.

Family and group counseling service provides group and family counseling sessions by experienced psychologists that help the family deal with psychological stress and correct common ideas and concepts about their patient's disease. It helps them to overcome the stage of shock, and move to the stage of acceptance after receiving the diagnosis of the cancer. It also includes implementing group psychological debriefing and family educational counseling sessions, & supportive groups to support each other's.

Recreational activities include:

Beautification service provides wigs for women and children & replacement breasts for women. wigs are cut by beauty experts to beautify the patient's face during and after chemotherapy as his/her desire, which has a positive effect on dealing with this critical stage and increasing self-confidence.

Medical clown moves among children while receiving treatment in the hospital to tell stories & novels, and distribute toys to children with cancer while receiving chemotherapy in order to relieve fears & divert their attention from the pains of doses. In addition to implementing entertaining interactive activities during the patients receiving educational lessons in hospital. This is done by a trained and specialized team of medical clowns.

Community activities include open days and group food invitations to integrate them into society and entertain them, parties, entertainment festivals, theatrical shows, social visits, and recreational trips for patients inside and outside the Gaza Strip.



Psychosocial Support Program **IN NUMBERS**

TRANSPORTATION SERVICE **8200**

SOCIAL SOLIDATORY & AID RELIEF

Health coupons	485
Food coupons, food supplements & drugs	7426
School backpacks	1200
EID clothes	210
Medical shoes	700
Eiddeya (cash aid) for children	83
orphan sponsorships	7
Qurbani meat distribution	1930 kg

FAMILY & GROUP COUNSELLING

Psychosocial support sessions	360
Family and group counseling sessions	1500
Social visits	200

RECREATIONAL ACTIVITIES

Medical clown	240
Group food invitations (Ramadan Iftar)	320
Recreational trips & events	35
Beautification	672

Psychosocial Support Projects & Initiatives

Providing Transportation for Treatment Abroad

294 SOH cancer patients & and their escorts are provided with free transportations to travel from the Gaza Strip through the Beit Hanoun crossing to receive treatment in hospitals in the West Bank & Jerusalem in the period of Jun. to Aug. 2021, with support by International Charity Organization.

Qurban campaign

Qurban campaign aimed to promote the principle of social solidarity that 1122 SOH cancer patients were provided with essential needs including Ramadan Iftars, zakat al-Fitr, zakat money & Eid clothes in the period of Jun. to Aug. 2021, with support by International Charity Organization.

Comprehensive care for children with cancer in GS

In partnership with the Community Training Center and Crisis Management and funded by Islamic Relief. Implementation period (January to November 2021).

The project provided psychosocial support to cancer patients by providing individual, group, and family counseling sessions of all for 106 children with cancer. In-addition to nutritional supplements, supportive medical tools, treatment, and a playroom.

EDUCATION PROGRAM

Cancer negatively affects the progress of school-age children educational process due to an inability to attend school at all during the treatment doses in the hospital that may affect school performance, slow educational progress and keep them from advancing to higher grade levels along with their peers, and consequently the psychological case of the child and his/her family worsens. A need for special school or classes is important to improve their mental health & raise their desire to live and response to treatment.

SOH education program seeks to help children with cancer acquiring appropriate knowledge and skills by following up their educational progress which is affected by the arduous treatment journey, & alleviate the burdens on their parents through contributing to strengthen the educational level of their poor academic achievement. It also includes educating patients and their families the skills they need to communicate while traveling for treatment such as travel instructions and the Hebrew language. The services included in this program:

Basic Education unit is provided by Smile of Hope School for Special Education including:

Classrooms in hospitals follow-up the educational progress of patients through assistive learning classes inside Al Rantesi Hospital in the Gaza Strip, and provide special educational services.

Remedial classes provide learning lessons designed to close learning gaps and help students with cancer catch up to their peers, which are implemented at SOH.

Training unit

Training courses provide special trainings related to patients such as Hebrew language courses to facilitate communication with medical staff in hospitals and at crossings during travel for treatment, and trainings for patients and their companions on how to deal while traveling.

Vocational training courses include barbering, beautification, tailoring, medical clown diploma, and others to enable patients & their families acquiring business practice skills.

Education program **IN NUMBERS**

ASSISTIVE & REMEDIAL CLASSROOMS

160

TRAININGS

780



Education Projects & Initiatives

Improve the education quality for Al-Rantisi hospital's patients

The project aims to improve the academic, cognitive and social level of 40 patients aged 6 – 12 years who are receiving specialized health services in Al-Rantisi hospital in the Gaza Strip including cancer, leukemia and Hemodialysis patients. It provided educational services and SOH's referral service, which was implemented in the period of 15 Sep. to 15 Nov. 2021, with support by National Committee for Summer Camps.

"Right to Education" project for Children with Cancer

In partnership with Islamic Relief & funding by Community Training Center and Crisis Management, SOH is implementing "Right to Education" project in the aim of enhancing the right to education for children with cancer. The project contributes to improve patients' access to educational services, and strengthen civil community organizations. It targets 98 female & male children with cancer aged between 6 – 16 years, in the period of 1st Oct. 2021 to 31 Oct. 2022

FROM FRUSTRATED PATIENT TO A PATIENT SUPPORTER

Jehad's Story

As soon as you set foot at SOH, a 30-year hard worker draws your attention as he tirelessly moves between the corridors carrying cancer patients' follow-up care documents in his hand to meet their needs.

Jehad's health case is not better than other cancer patients. His battle with cancer dates back 17 years when he was diagnosed with leukemia to start a new experience of pain and frustration that was enough to end his life due to the harsh disease symptoms.

Jehad Krayem now shares his journey from a frustrated patient to a Patient supporter. It is totally inspiring that 12 years ago Jehad came to SOH as a patient receiving medical & psychological treatment, then became a volunteer helps other patients.

"Despite frustrating & extreme pain I felt at the beginning of my disease, I decided to move from self-destruct to self-care which is essential for my healing through my participation in the patients

Becoming a Patient Supporter

He completes, "I know my experience of cancer helped make a big difference in the patients care that I became a responsible for following-up the patients' affairs in SOH, which enabled me to be hope voice for other patients undergoing the similar experience. They looked towards me as a role model as a cancer fighter, & that was a strong push for me to provide all services they need and facilitate their affairs in treatment abroad & within the relevant institutions".

He adds, "I supervised on "From Heart to Heart" initiative, which aims to raise the patient's morale through visits for patients. SOH became like my home where I go to help the patients psychologically & facilitate their medical issues".

Jehad assures, "My experience with cancer reflects the importance of the psychological aspects of the patient's life and how to cope with them. Here I should thank Professor Osama Al-Khazendar as a member of the Board of Directors in SOH who helped & supported me to integrate into society & be a patient supporter".

Finally, Jehad sends messages to the patient's family and the surrounding community to be supporters & well-dealers with the patient so as not to make him/her feel weak.

OUR SUPPORT

We collaborate with a wide range of actors to draw on their expertise and to ensure the highest coordination in development efforts in humanitarian action. These partnerships help us reach our goals and desired targets with the necessary support, while boosting the efficiency and effectiveness of development aid, below is a list of our partners (organizations & community individuals) & the areas of intervention:



International Medical Corps

Psychosocial support

Caritas Jerusalem

primary health care, medical consultations, & medicines

International Charity Organization

Transportation service -
Qurban campaign

Ministry of Health

Covid-19 vaccine for SOH's patients , Health education

Community Training Center and Crisis Management

Psychological counseling sessions, education

National Committee for Summer Camps

Summer camp for children with cancer- Education

Saint John Eye Hospital

Eye check for SOH cancer patients

PALTEL GROUP

Physiotherapy unit development at SOH

Palestine Red Crescent Society

Food coupons

Agricultural Development
Association

Food coupons

Press-House

Awareness Campaigns on
breast cancer

Ministry of Social
Development

Food coupons

Improvement and Development for
Communities Center

Qurbani meat, Food coupons
& vouchers

Islamic Relief

Qurbani meat distribution

Ministry of Social
Development

Food coupons

IHH – Turkey Humanitarian
Relief Foundation

Food coupons

NBC Coca-Cola/Cappy

Food coupons

Endorsement Fund for the Late Hajj
Hashem Atta Al-Shawwa

Cash Assistance

Road to Recovery Charity

Transportation for patients'
treatment abroad

International Charity
Organization - Australia

Meat

Dr. Musa Abu Zaid

Food parcels, medicines &
nutritional supplements

Dr. Ziad Al Khozondar

Medical consultations

Dr. Rateb Al Baba

Medical consultations

Al- Shorafa Family, Mr. Badawi
Al-Yazji

Clothing for children with
cancer

Dr. Youssef Al Kurd

Medical consultations

Dr. Mohammed Ashour

Medical consultations

Dr. Wael Al Wade'ia

Furniture for SOH,
transportation for patients

TOGETHER WE CAN DO SO MUCH

CONTINUOUS IMPROVEMENT

We **regularly review** stakeholder engagement mechanisms to ensure that they respond in the most efficient way possible to the needs.

RESPONSIBILITY

We act responsibly & **build relationships based on ethics, integrity & sustainable development, & respect** for human rights & the people affected by SOH various activities.

COLLABORATION

We promote collaboration with the stakeholders, in order to contribute to compliance with **our purpose & values** & enhance **sustainable community**.



TRANSPARENCY

We ensure transparency in our relationships & in financial & non-financial communications, sharing **truthful, relevant, complete, clear & useful information**.

ACTIVE LISTENING

We practice active listening encouraging effective communication & direct, fluid, constructive, diverse, inclusive dialogue using techniques include **personal interviews, workshops, focus groups, forums, community meetings, surveys, and participatory tools** to meet the needs of different stakeholders.

PARTICIPATION & ENGAGEMENT

We encourage the participation & engagement of the stakeholders in all of SOH activities, **promoting consultation processes** especially in the planning, construction, operation & evaluation of SOH programs & projects.

Looking ahead, our ambition is to deepen our commitment to becoming an entrepreneurial association in humanitarian work where cancer patients & their family's rights are respected & their needs are met to get a dignified life in a fair Palestinian society.

Cancer patients still suffer from unacceptable discrimination because of the common prejudice that a cancer diagnosis is a death sentence in many communities, especially in the Gaza Strip. This is due to the unjust stigma attached to the word cancer, lack of capacities, weak access to healthcare services, lack of public awareness and education about cancer, as well as challenges of access to cancer prevention and treatment services.

SOH is responsible to enhance the response to the most cancers affecting children, women, and men by providing evidence-based strategies to reduce the burden of cancer in the Gaza Strip. The SOH's strategy directs efforts to make informed decisions to create fair access to preventing & combating cancer for all needy patients while providing comprehensive care services to improve their quality of life.

We will be working across SOH and with the wider sector to put the patient voice at the center of locally-led humanitarian action being the most priority in this case. So, "**UNLOCKING THE POWER OF THE PATIENT VOICE**" is the humanitarian slogan of our Strategic Framework 2022-2024, and SOH strongly contributes to strengthening the response to this voice. SOH is pleased to proudly present this integrated work as a platform for fair access to preventing & combating cancer through a focus on creating new approaches, and promoting awareness to ensure timely and appropriate access to diagnostic and treatment services.

Being access to cancer diagnostics and treatment services is difficult to navigate and can be expensive and exhausting for patients, & unavailable in all health facilities in the Gaza Strip, leading to continued deprivation, our strategic framework is directed to ensure appropriate referral of patients, and to enhance the coordination of patients' affairs across care pathways inside and outside the Gaza Strip, where these services can be provided through organized partnerships to serve the patients' needs. Cancer has no borders, so collaboration against this disease should also be borderless.

The strategic framework also provides many opportunities to advance the prevention and combating of cancer for all patients, while ensuring that services are inclusive socially, economically, and environmentally, and most importantly, respond to the patient's voice. We will produce real added value and contribute to a better life for cancer patients in the Gaza Strip.

Imagine a world free from cancer .. Help make it a reality

People especially cancer patients face a multitude of challenges in our fast-changing and complex community in the Gaza Strip. These challenges prompt us to provide increased and varied support to those vulnerable patients including women, children, youth & elderly.

After being diagnosed with cancer, patients in Gaza face a series of difficulties through the treatment journey. They have to wait for months before being able to receive treatment being must obtain a permit from Israeli authorities to travel for treatment due to a shortage of vital medications which is a threat to the therapeutic protocols given to the patients, lack of drugs, lack of medical equipment, high costs of traveling & treatment & others. All this requires working together towards humanitarian, health care, and relief work to save the patients' lives.

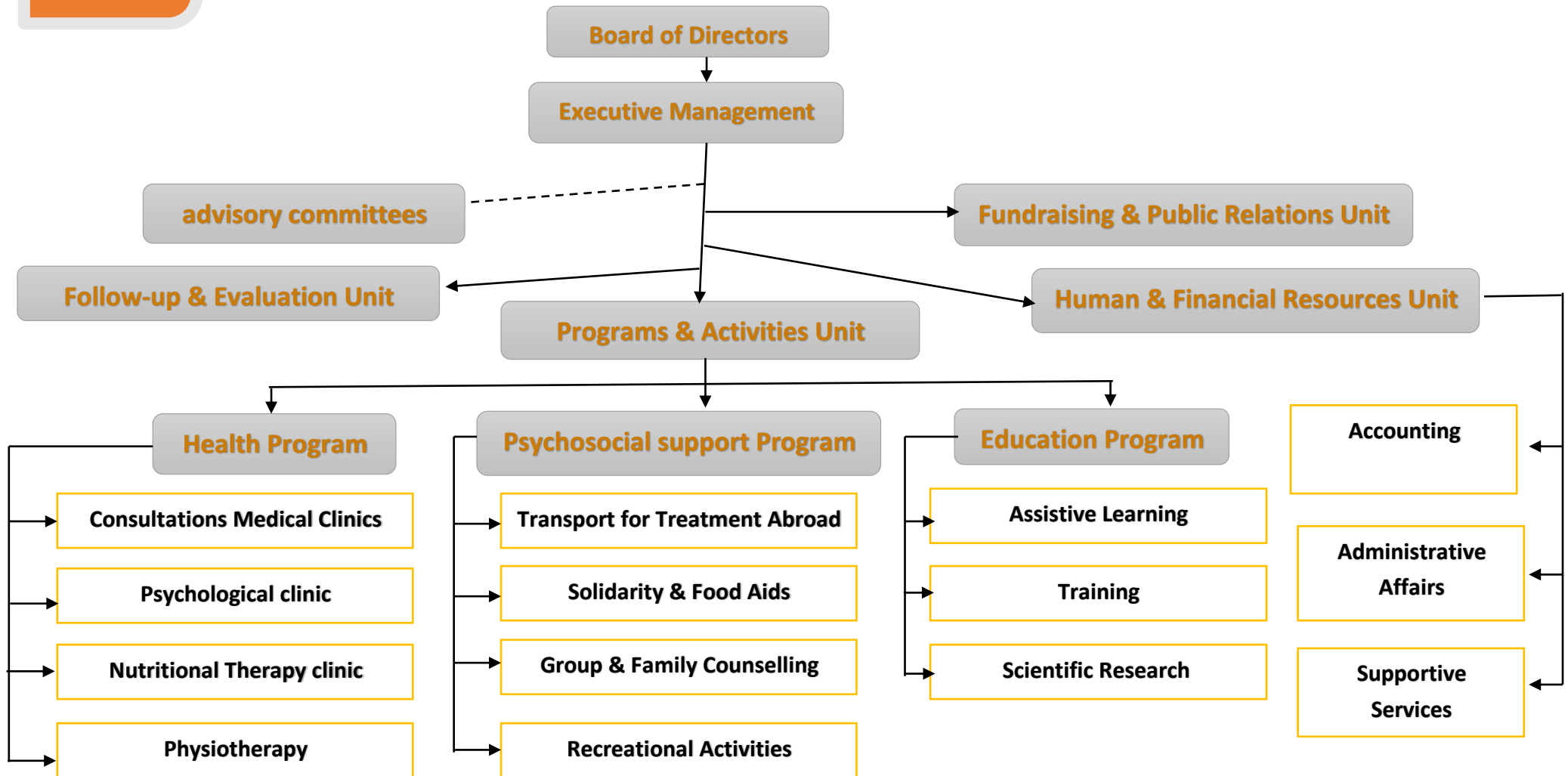
SOH supports hundreds of cancer patients and their families from the Gaza Strip such as medical consultations, medical supplies, free transportation, psychosocial support, and other needs to help them to improve their life quality & fight the harsh disease.

SOH believes that in order to improve and expand its services, it needs more support from local & international society, needs to work together to address the difficult humanitarian conditions of cancer patients in Gaza, as a prolonged blockade and repeated wars had negative impacts on the health system the whole population.

Your support of the Palestinian Cancer Society is a thoughtful way to honor someone whose life has been impacted by cancer, it means we can bring hope to cancer patients & chance of survival.

Being a partner with us in this humanitarian action, you help us to keep our work, enhance accountability and transparency, and raise resources to improve and expand our services, in a response to our humanitarian slogan **"UNLOCKING THE POWER OF THE PATIENT VOICE"**.

Together we are fighting cancer smarter, better, and less hard than we ever have before



FINANCIAL STATEMENT

Financial Position in (31.12.2021) (ILS)	94,098.27 ILS
Total Revenue during the year 2021 (ILS)	965,867 ILS
Total Expenses during the year 2021 (ILS)	890,089 ILS

THANKS, FROM OUR COMMUNITY

Throughout the harsh conditions & crises, our supporters have helped thousands of cancer patients & their families to secure better life including health, education, psychosocial support & relief assistance services & others. Thanks to the generosity of our partners, donors, staff, and our Palestinian community.

We are honored to continue serving the community, especially people with cancer in these difficult times and humbled by the many kind words of support and gratitude we have received. As part of our SOH family, these heartfelt words belong to you. Thank you for your support, your generosity, and for making a difference for so many.



CONTACT US

Address: Palestine- Gaza Strip, Gaza City, Almina' Area, Al-ghefary tower, first floor

Tele-fax: 082822121/ **Mobile:** 0592445554

Email: sohcenter@hotmail.com/ **Website:** <http://www.soh.org.ps>